

DESTINATION

North West Province



Wildlife



Natural Resources



Heritage



Adventure



Investment



Agriculture



It's Your North West Province
Explore, Experience and Enjoy It



NORTH-WEST
PARKS & TOURISM BOARD
EXPLORE. EXPERIENCE. ENJOY.



North West Tourism

DESTINATION

North West Province



WELCOME TO THE
**NORTH WEST
PROVINCE**

Where in South Africa is The North West Province

64 Towns, 32 World Class Attractions, Investment Opportunities,
Untamed Conservation, Rich Culture and Adventure

Bojanala District

Brits • Broederstroom • Derby • Koster
Hartebeespoort Dam • Kroondal • Phokeng
Magaliesburg • Mogwase
Rustenburg • Swartruggens • Jericho
Beestekraal • Hekpoort • Tlhabane
Marikana • Mooiooi • Skeerpoort
Moruleng • Moretele • Madibeng

Dr. Kenneth Kaunda District

Orkney • Klerksdorp • Leeudoringstad
Stilfontein • Potchefstroom
Venterdorp • Makwassie
Wolmaransstad
Hartebeesfontein

Ngaka Modiri Molema District

Mafikeng • Coligny • Delareyville
Groot Marico • Lehurutshe • Lichtenburg
Mahikeng-Capital City • Mareetsane
Ottosdal • Sannieshof • Zeerust
Barberspan • Setlagole • Madibogo

Dr. Ruth Segomotsi Mompati District

Bray • Schweizer Reneke • Stella
Taung • Tosca • Vryburg
Amalia • Ganyesa • Taung
Ganyesa • Morokweng • Christiana
Bloemhof • Podimoe



www.tourismnorthwest.co.za



LUXURY

Unparalleled Splendour

COME MEET US IN THE
North West Province



www.tourismnorthwest.co.za





When taking to the road in the Bokone Bophirima Province one is often surprised by the harsh contrast in the landscape, varying between lush forest-scapes, to arid plains, rolling grasslands, and bushveld. But the North West is all about the authentic African bush experience and it is the hot, dry African climate, which is truly unique.

Home to the fantastic Pilanesberg and Madikwe population of just over three million people. so conveniently because of its proximity to the game reserves, the Bokone Bophirima Province Johannesburg International Airport and the major offers up the big 5, fantastic bird-life and wide- Summer brings hot, sunny days (temperatures in centres of Johannesburg and Pretoria. open African skies. the region of around 22 to 34 °C); winters are relatively warm during daylight hours, however the While visiting the North West, the traditional The area boasts archaeological discoveries that evenings can get somewhat chilly (temperatures warmth of the province will be shared with you, go back to the beginnings of humankind, as well range from 15 to 22 °C). as well as pride in the history and culture of the as the world-famous Sun City hotel complex, province, and visitors can take home with them creatively dedicated to ancient lost civilizations Small wonder then, that so many choose to stay lasting memories of a special experience. There's and modern-day pleasures. in this place of sun-baked, often intemperate no reason not to make your next holiday one to climate. The Province of the North West is a must- the North West.

The province extends all the way from Gauteng to see destination - one that is diverse and exciting. the Botswana border. The area is flanked by the Visitors seeking to experience the wilderness Magaliesberg and the Kalahari Desert, and has a and cultural treasures of the North West may do



Chasing the Sun

Sun City & the Lost City

Located only two-hours from Johannesburg, Sun City is a vibrant mix of entertainment, water sports, golf, gambling and family fun – a luxuriant and tropical fantasia nestled deep in the African bushveld. This combined with exhilarating game viewing at the adjacent Pilanesberg National Park makes for a truly memorable experience.

Sun City offers entertainment, as well as leisure and relaxation opportunities for the most discerning of guests and those in search of casual family fun.

Sun City invites guests to relax, unwind and make the most of the world-class facilities on offer. With four different hotels to choose from, Sun City has a holiday experience for everyone – from affordable family fun to the height of luxury. Choose between the Palace of the Lost City, the Cascades Hotel, Sun City Hotel and The Cabanas.

The truth is – Sun City is fun for the whole family! The Valley of Waves at Sun City, the most advanced water park in South Africa, provides hours of fun under the glorious South African sun. The Roaring Lagoon is at the centre of the park and generates giant waves that intermittently crash down on the white sandy beach.

Surrounding the lagoon a meandering river allows for a wonderful scenic tube-ride, and for adrenaline seekers there are five exhilarating water-rides, including the Temple of Courage, to choose from.

Additionally, a host of water sports and exhilarating outdoor activities are on offer while at the Sun City Resort. The less adventure-seeking guest can enjoy the daily morning and sunset cruises. Tennis, squash, horse riding and mountain biking are also all on offer and the resort boasts a series of well laid out jogging trails.

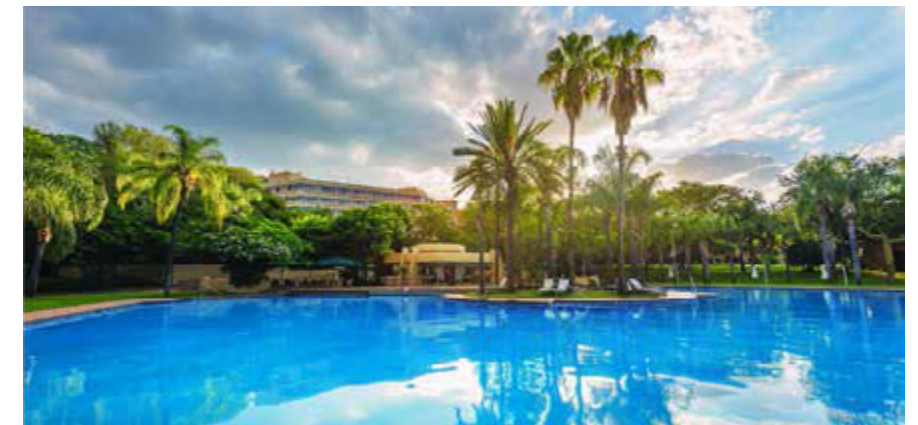
For dazzling evening entertainment the acclaimed Sun City Extravaganza takes place every evening with an afternoon performance on Sundays. The Sun City Extravaganza has a long history and reputation as one of the most exciting shows in the country.

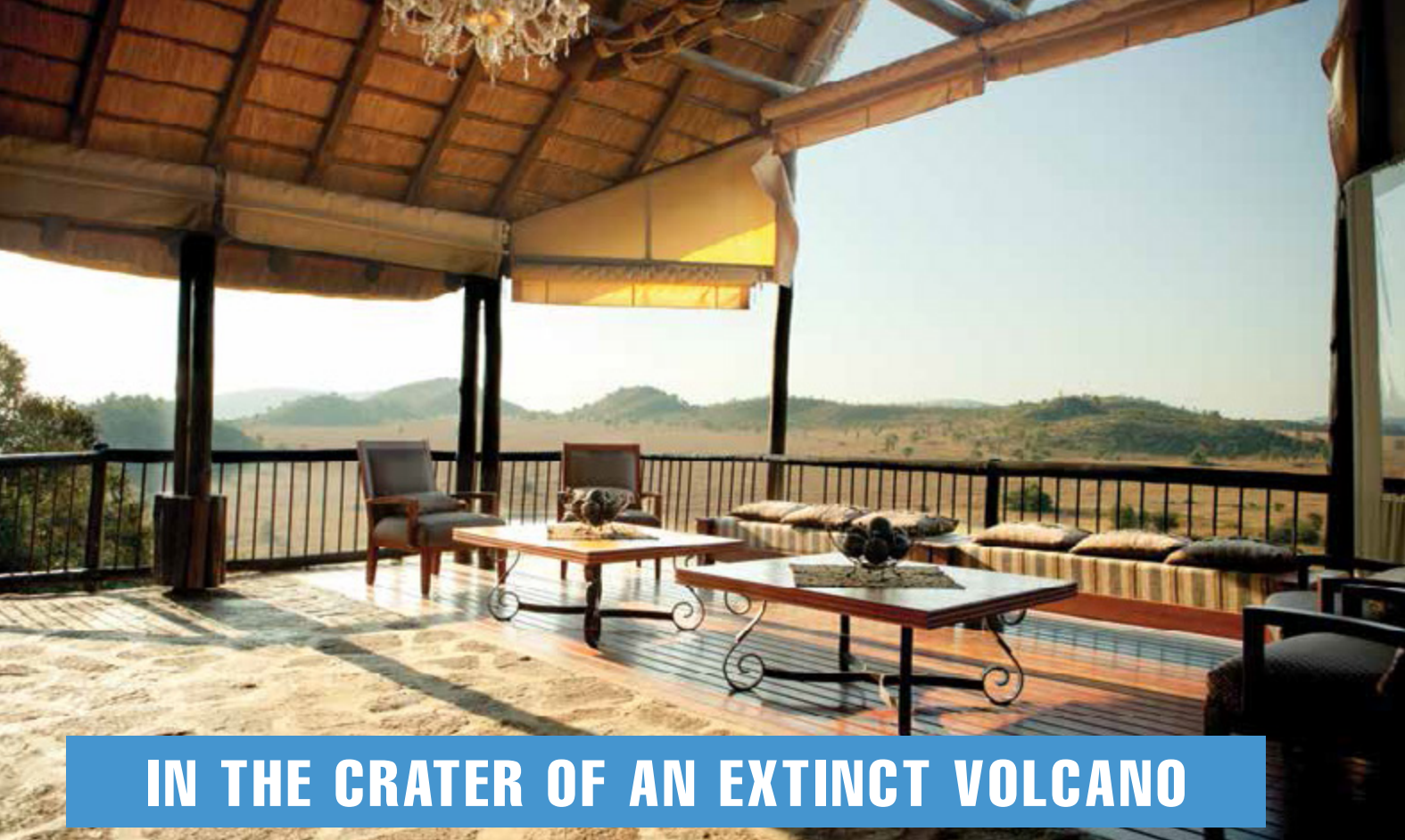
Aside from this however, guests can also try their hand at blackjack or the slot machines at Harlequins Casino in the Sun City Hotel, one of the oldest casinos in South Africa. Alternatively, sit back, relax and enjoy a cocktail or sumptuous meal at a wide variety of restaurants, from seafood and sushi to grills and fine dining.

But this isn't where it ends... Sun City can lay claim to having two of the best golf courses in Africa. Both courses were designed by the well-known Gary Player and offer challenging courses in extremely scenic surroundings. The Lost City Golf Course is a unique experience and offers spectacular views across the bushveld.

The Gary Player Golf Course and Country Club is home to the annual Nedbank Golf Challenge and the tree-lined course is a challenge to both novices and professionals.

For a holiday unequalled in beauty, variety and interest, Sun City has something for everyone. Furthermore, the wide choice of conference venues ensures a level of convention and banqueting facilities, which few can beat.





IN THE CRATER OF AN EXTINCT VOLCANO

PILANESBERG

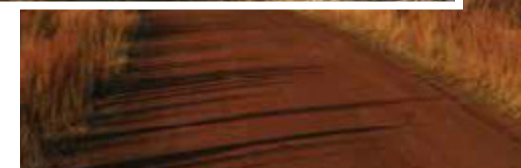
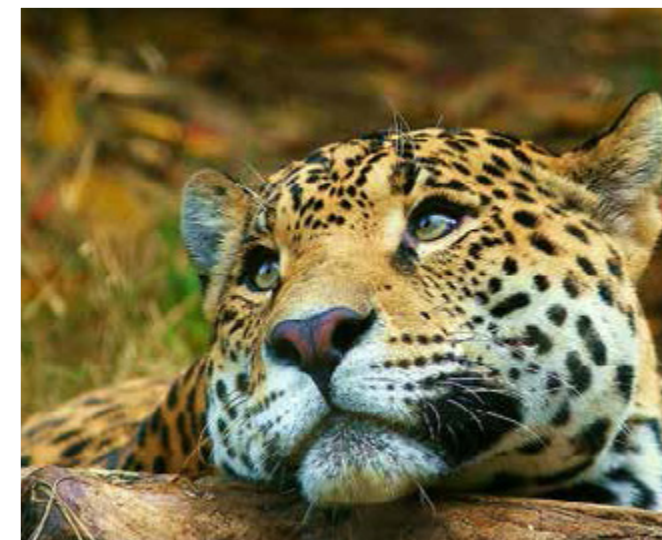
The crater of a long extinct volcano is the setting of Pilanesberg National Park – a fascinating alkaline complex produced by volcanic eruptions some 1300 million years ago. Pilanesberg is one of the largest volcanic complexes of its kind in the world

The Pilanesberg National Park is splendidly located within the Bokone Bophirima Province of South Africa and borders with the entertainment complex of Sun City. The park was originally opened way back in 1979 as a part of Operation Genesis.

Three rings of hills fringe the area covering the Pilanesberg National Park. This is the park's primary geological feature and is known as 'The Pilanesberg National Park Alkaline Ring Complex.' Ancient, even by

geological time scales, this extinct volcano is the most perfect example of an alkaline ring complex. A number of rare (but not necessarily economically important) minerals occur in the park, which accounts for the Pilanesberg National Park rating high amongst the world's outstanding geological phenomena.

Pilanesberg has survived ages of erosion and stands high above the surrounding bushveld plains and the early presence of man can be seen in



the numerous Stone and Iron Age sites that are scattered throughout the park. The park exists within the transition zone between the dry Kalahari and wetter Lowveld vegetation, commonly referred to as "Bushveld". Unlike any other large park, unique overlaps of mammals, birds and vegetation occur because of this transition zone.

Springbok, brown hyena, the red eyed bulbul, and camel thorn trees usually found in arid areas are found in cohabitation with moist-area-limited impala, black eyed bulbul and Cape chestnut trees.

Off the centre of the park is Thabayadiotso, "The Proud Mountain". The Park ranks among the largest of the national parks in South Africa (it is in fact the fourth largest park) and covers an area of 55 000 hectare. The beauty of Pilanesberg is reflected in a large central lake, the Mankwe Dam. The Pilanesberg National Park provides the ideal malaria-free African safari, and presents a myriad of fantastic adventure activities, which are bound to have visitors coming back for more.



BIG 5 ENCOUNTERS

➔ Besides housing Africa's Big 5, the Pilanesberg National Park is also home to a wide variety of rare and common species such as the nocturnal brown hyena, the fleet-footed cheetah, the majestic sable, as well as giraffe, zebra, hippo and crocodile. There are close on 200 km of excellent dirt roads within the park, which can be used for either self-drives or guided drives.

CHOICE ACCOMMODATION

➔ Accommodation within the Pilanesberg National Park takes the form of everything from self-catering and camping facilities to 5-star luxury game lodges and resorts. There is literally something for everyone, whether you are looking for a relaxed family-friendly environment or a more private and secluded hideaway.

MADIKWE

THE MAGIC AND THE MYSTERY



The Bokone Bophirima Province is reclaiming its reputation as one of the top wildlife areas in South Africa with large tracts of farmland being returned to the natural abundance of its past. Of these, Madikwe Game Reserve is a unique safari destination catering for all holiday and business travel. From intimate lodges to conference and accommodation facilities, Madikwe provides a range of safari lodges, situated in prime locations to satisfy all tastes.

The Madikwe Game Reserve is located in South Africa along the Botswana border. Only four hours' drive from both Johannesburg and Pretoria, and about 45 minutes via air charter to any one of the two landing strips in the reserve, Madikwe is now one of South Africa's prime safari destinations and one of the biggest Big 5 reserves in the country.

Madikwe is more than just a game reserve – it is a conservation success story worthy of a campfire raconteur. The 75 000 hectare reserve has been painstakingly restored from farmland to its natural environment. As if this was not enough, the reserve, in a bold move, undertook the largest ever game translocation in the world, which occurred when 8 000 animals of 28 species were moved to Madikwe in "Operation Phoenix" which was concluded in 1997.

However, this is not where it all began. In the late 1980s, the area now known as Madikwe Game Reserve was really just large tracts of farmland. Used primarily for cattle farming, the land offered no lasting benefit, and due to its poor quality, it could generate very little economic value for the surrounding communities. In the early 1990s, a Set Plan independent study was commissioned. The study aimed to look at the surrounding residential communities to identify what could be done to create an economic vehicle for the area. In a ground breaking move, eco-tourism was finally identified as the engine for economic growth, and the land was proclaimed for eco-tourism purely on the grounds of being the most appropriate and sustainable land use for the area.

Today, four communities surrounding the Park have been allocated rights to certain sectors of land, and can benefit

from these rights through leasing the land and building lodges upon it, as well as job creation generated from these lodges.

Subsequently, Madikwe is seen as one of the "new South Africa's" success stories in the area of upliftment and poverty eradication. Today the picturesque setting offered at any one of the multitude of luxury lodges within the reserve is influenced by its unique geographical positioning. Madikwe lies within a transition region between lowveld, bushveld and the Kalahari thornveld, meaning that there is a tremendous diversity of fauna and flora including the black and white rhino, buffalo, elephant, lion, leopard, cheetah and wild dog. Day and evening game drives and walking safaris through Madikwe, allow you to get close to these animals and provide great photo opportunities.

DID YOU KNOW?

➔ The North West game reserves are malaria free and within easy reach of the major centres of Johannesburg and Pretoria, allowing for complete peace of mind during your safari holiday. The game reserves offer a selection of safari lodges ranging from rustic comfort to unadulterated luxury.

RHINO CONSERVATION

The Bokone Bophirima Province is home to both black and white rhino, and the local authority is doing what it can in conjunction with the World Wildlife federation to save this beautiful beast whose life is being threatened by poachers.

Of the three Asian rhino species, two – Javan rhinos and Sumatran rhinos – are Critically Endangered. A subspecies of Javan rhino, recently re-discovered in Vietnam, only survives as a tiny remnant population, if at all.

Successful conservation efforts have seen the third species, the greater one-horned (or Indian) rhino increase in number, leading to a reclassification from Endangered to Vulnerable. Even so, the species is still poached for its horn. Different subspecies of the two African rhino species are similarly faring differently. Once thought to be extinct, southern white rhinos are now thriving in well-protected sanctuaries and are classified as Near Threatened. In contrast, the northern white rhino only survives as a remnant population of 4 individuals. Black rhinos have also increased over the past decade or so, although total numbers are still a fraction of what they were 50 years ago and one subspecies is classified as Probably Extinct.

THREATS TO RHINOS

Demand for rhino horn is the greatest threat. Although international trade in rhino horn has been

banned under CITES (Convention on International Trade in Endangered Species of Fauna and Flora) since 1977, demand remains high – fuelling rhino poaching in both Africa and Asia.

Demand in Yemen for rhino horn dagger handles, worn as status symbols, grew in the 1970s and a 20-fold rise in the price of rhino horn had a devastating effect on rhino (mostly black) populations.

Rhino horn is also used in traditional Asian medicine to treat a variety of ailments. The major markets are China, Taiwan and South Korea.

Although some traditional medical practitioners are using alternatives, a TRAFFIC survey of medical practitioners showed that 60% stocked rhino horn and 27% maintained that it was essential to their work.

To help protect these endangered species, WWF is assisting the North-West Parks Board (NWPB), the authority responsible for a number of protected areas within the province, to improve rhino conservation. This includes range expansion, aerial and field surveys, and tagging activities. Increased surveillance will also improve the general security of these animals. The NWPTB administers 14 protected areas within the North-West Province in





South Africa. There are 5 parks (Borakalalo national park, Botsalano game reserve, Mafikeng game reserve, Madikwe game reserve and Pilanesberg national park) which harbour 2 important white rhino (*Ceratotherium simum simum*) populations according to criteria set by the IUCN's Species Survival Commission's African Rhino Specialist Group (AfRSG).

The project supports the incremental ear-notching of rhinos as well as implanting passive transponders into horns and rhinos in order to link specific horns to specific rhinos. The cumulative effect of this exercise will improve both the biological and security monitoring of individual rhinos in the parks.

OBJECTIVES

The objective of the project is to assist the NWPTB in maintaining its high level of management, conservation and protection of rhinoceros by providing funding support for specialized equipment and services.

SPECIFIC OBJECTIVES:

1. Create a further important white rhino population within the NWPTB.
2. Further enhance the security of the white and black rhino populations by training staff in field techniques.
3. Improve the identification of white and black rhino populations through micro-chipping and ear-notching.
4. Optimise the potential for tracking and identifying rhino horns/parts within the SADC region.

SOLUTION

1. A monitoring strategy has been devised whereby the rhinos are ear notched. This allows them to be individually identifiable through aerial or ground surveys.
2. Field staff are trained to conduct ground surveys to collect more frequent and detailed population dynamics data, such as sex and age data, breeding periods, calving intervals, home ranges, and territories of individuals and also general movement and distribution.
3. Ear-notched animals should also be implanted with transponder micro-chips to facilitate post-mortem identification. Photographic records for identification purposes of all known animals should be updated regularly.
4. In the smaller parks, each rhino can be individually marked, thus providing valuable information for management to fully understand each population. In the larger parks the strategy is to have at least one third of the population individually marked to enable the development of a statistically sound and repeatable population estimate.
5. This 'mark-recapture' methodology contributes to a better understanding of a wide range of general population data vital to good rhino management. The increased surveillance of the white rhinos will also improve the general security of these animals.

Taung Heritage Route

The famous Taung Heritage Site is the archaeological site where the fossilized skull of a young child was discovered by miners in 1924. The skull was taken to the noted Australian archaeologist, Dr. Raymond Dart who named it "Australopithecus Africanus", meaning the southern ape of Africa.



This discovery led many scientists to believe that the origin of early man was initiated on the African continent. The finding of the Taung Skull at the Buxton Quarry was noted to be one of the most significant archaeological accomplishments of time, and the Taung Site was proclaimed a UNESCO World Heritage Site.

Taung, meaning "the place of the lion" was named after Tau, the chief of the Bataung people. A

monument to the discovery of the Taung Skull has been set up and an old mine tunnel has been opened for exploration. The Buxton Quarry, which is no longer being mined, remains an important scientific research site. The azure Blue Pools are situated at the Buxton Quarry and are surrounded by picturesque caves and streams.

The Taung Dam is an attractive picnic area situated only a short distance from the village, while on the outskirts of the village one finds the Mmabana Arts and Culture Centre. This Centre is a modern social and educational centre offering locally produced arts and

crafts. The Dinkwaneng site – home to some of the country's finest examples of San art – is located a short distance from the town near the village of Manthestas.

The Taung Skull Heritage Route

Launched in 2009, the Taung Skull Heritage Route is a living treasure exhibition of the district's remarkable heritage, history and cultural experience.

This ancient pathway in the land which gave birth to mankind, the home to the famous Taung Child Skull and the area that boasts archaeological discoveries that go back to the beginnings of humankind; today considered a World Heritage Site.

The Taung Heritage Route takes you through the region's magnificent Heritage Sites as well as areas rich with roaming wildlife.

- Mmabana Taung Cultural: A modern social and educational centre where the annual Art and Cultural Calabash event is hosted during September.
- Dinkwaneng – an area rich with the Batswana history, where you will also find Bushmen's footprints and rock engravings.

A trip to the Taung Heritage Site allows visitors to lose themselves, even for just a moment, in the rich history of the area, and in so doing allows a glimpse of a world that existed millions of years ago. It is by all accounts a richly rewarding experience.

The Magaliesberg Biosphere. From Pretoria to Rustenburg; from Marikana the Cradle of Humankind, three and a half thousand square kilometres of the most amazing landscape in the world. Proclaimed an international Biosphere Reserve by UNESCO in June 2015.

Spectacular scenery, adventure trails, canopy tours, horseback safaris, battlefields and heritage sites. This is YOUR Biosphere. This is YOUR heritage. Whether your ancestors were Tswana, Nguni, Boer or British, your roots are here. Come and celebrate the international recognition of our heritage. Share the pride. Come and explore this awesome place.

The Magaliesberg UNESCO Biosphere – Globally acclaimed; locally cherished.

What is so special about the Magaliesberg?

The Magaliesberg region is virtually without equal in the world. The region is characterised by unique geology, topography, habitats and heritage. Despite being hundreds of kilometres inland, straddling two landlocked provinces - Gauteng and North West - the rocks of the Magaliesberg bear the ripples of tides which lapped the shore more than 2 000 million years ago. The ocean then met a land surface devoid of life and an atmosphere that was unbreathable.

The region is unparalleled in its richness of history and biodiversity and reflects many aspects of South African geology, biodiversity, human evolution and history. It lies at the interface of two great African biomes – the central grassland plateaux and the sub-Saharan savannah – with remnants of a third, Afro-montane forest. The landscape accommodates species from each of these biomes and the result is an exceptionally diverse fauna and flora that has drawn naturalists and explorers to the region for the

past two centuries. The biodiversity is matched by its unique human history encompassing a million-year time line from early hominids through Stone and Iron Age cultures, pre-colonial Tswana tradition and the South African Wars. In short, it is a priceless encapsulation of South African heritage and landscape and serves as a focal point for national unity and pride.

The rugged scenery and benign climate are especially suitable for outdoor recreation and the close proximity to the Gauteng conurbations and the mining city of Rustenburg make it particularly suitable for human use. Tourism, recreation and residential developments are expanding rapidly in the area, providing access to this valuable public asset while simultaneously protecting it for posterity poses special difficulties.

"The entire duration of human existence - let alone the lifespan of just one human being - is humiliatingly insignificant when compared with the period of the creation of the Magaliesberg." ~ Vincent Carruthers, author of "The Magaliesberg"

Biospheres are designed to meet one of the most challenging issues the world faces today: conserving the diversity of plants, animals and micro-organisms which make up our living biosphere and maintain healthy natural systems, while at the same time meeting the material needs and aspirations of people.

Under the aegis of the United Nations Educational, Scientific and Cultural Organisation (UNESCO), the first biospheres were designated in the mid-1970s.

As of 2015 total membership has reached 651 biosphere reserves, including 15 trans-boundary sites, in 120 countries occurring in all regions of the world

Magaliesberg Biosphere

Hartbeespoort Heart and Soul

Surrounded by the majesty of the Magaliesberg Mountains, the Hartbeespoort Dam is very popular for day trips or longer stays. There are water sports aplenty, including parasailing, windsurfing, water and jet skiing, as well as paragliding, hang-gliding or hot air ballooning. The town boasts an aquarium, private zoo, a snake park and a cableway.



It's closer than you think...

Houseboat Cruises

Explore the many inlets of this magnificent stretch of inland water on your very own houseboat. Visitors will find countless spots from which to enjoy the mountain views, the abundant bird life and game viewing; or merely relax and enjoy fishing from the exclusivity of your houseboat.

needs, and opens its doors to small groups of corporate delegates for a one-day stress relief programme, or for bigger groups the entire venue is available.

Mangwanani is also an idyllic setting for weddings or private parties catering for up to 100 guests at any given time.

For further information visit: www.mangwanani.co.za

For the More Adventurous

GoVertical Mountaineering Adventures is an adventure company with a passion for nature and its thrills. Whether it's the adrenalin rush of abseiling down a vertical cliff, discovering the surreal world of ancient lime stone caves, the hectic pace of kloofing, reaching the summit of a majestic mountain or canoeing through the rapids, there will be an adventure to suit you.

For further information visit: www.gotrekking.co.za

The Scenic Approach

Still in operation today the Hartbeespoort Dam Cableway Experience offers majestic views of the entire Hartbeespoort region. In addition to all the history and memories it invokes, the cableway boasts the moniker "Longest Monocableway in Africa." This somewhat thrilling adventure offers a bird's eye view of the whole town and offers an uninterrupted view of the scenic splendour of the Hartbeespoort Dam.

For the Tired and Overworked

Situated just 30km from Midrand and 20km from Pretoria, the Mangwanani Day Spa offers the ideal tranquil setting for delegates to enjoy a day of decadence and complete relaxation, de-stressing and total pampering.

This unique African Spa experience incorporates wellness, entertainment and social responsibility. The entire staff is committed to focussing on relaxation while indulging all the senses in true decadent revitalization. The spa offers personalised packages tailored to its clients'

More Attractions

Also of interest is the Crocodile Ramble, an arts and crafts route with day visitor and overnight facilities. Pecanwood Estates hosts the annual Nelson Mandela Invitation Golf Tournament. Hartbeespoort is the gateway to the province's Heritage Route, which starts at the dam, and heads off to the Pilanesberg National Park and the Madikwe Game Reserve in the north.

It's closer than you think and a wonderful way to start your travels and explore your heritage in the majestic Bokone Bophirima Province...



18 DESTINATION North West

HARTBEESPOORT CABLEWAY



A grand affair awaits you!

Expected to be open soon, the Aerial Cableway Hartbeespoort will offer uninterrupted 360°panoramic views of the Magaliesberg, home to the endangered Black Eagle.

Explore. Adventure. Delight.

HISTORY

→ The original cableway was constructed in 1973, and over the decades entertained countless visitors, both local and international giving them a birds eye view over Hartbeespoort Dam and its surrounding areas. The cableway was home to adventure seekers and flying enthusiasts and became the central hub for paragliding and hang gliding activities for many years. The cableway fell into disrepair and was subsequently closed in 2005.

New OWNERS

→ In 2010, Zargodox (Pty) Ltd, a private initiative with the vision of re-establishing Hartbeespoort as a pivotal tourism hub, bought the old cableway, and has invested enormous amounts of time and money to bring to the North West and unparalleled Aerial experience.

New EQUIPMENT

→ With new headgear and new cabling the Aerial Cableway Hartbeespoort has successfully been refitted and re-engineered to International Canadian specifications. Fourteen new cable cars, manufactured of high strength aluminium, built to carry six passengers at a time, were installed, and boast the same carrying capacity as the Table Mountain Cable Car.

What's on OFFER

→ The Aerial Cableway Hartbeespoort boasts two modern restaurants, under the Bugatti franchise, one at the top and the other at the base station. There will be an option to shop at the top and bottom, browse for souvenirs and fine gifts. A KidZone play area and pizza cafe will keep the children busy.

Operating TIMES

→ Open 7 days a week, from 08:00 until 16:30.

→ T:012 253 9912

→ URL: www.hartiescableway.co.za



It's Your North West Province

Explore, Experience and Enjoy It



NORTH-WEST
PARKS & TOURISM BOARD
EXPLORE, EXPERIENCE, ENJOY



BUSINESS TOURISM WITH STYLE!

Over the years, an estimated 7% of all foreign tourist arrivals to South Africa were made up of business tourists, translating to over half a million business tourists. And even though there is strong regional and international competition, the business tourism sector within the Bokone Bophirima Province of South Africa has grown substantially during recent years.

In this regard, the aim of the North West Parks & Tourism Board is to position the province as a unique, desirable and feasible destination for meetings, incentives and conferences.

Most successful business owners and managers are aware of the fact that a big factor determining the success of any workshop, incentive or conference is the location in which it is held.

But which country club to go to for the yearly golf day, what to do for the next team building exercise, and which venue should host this year's annual seminar? We advise that you come to the Bokone Bophirima Province, where a multitude of venues are available to meet your every business tourism need.

Some superb conference, banquet and team building venues are scattered throughout the Bokone Bophirima Province. If you are looking for that ideal place to take your colleagues, employees and business associates, the province has a wide variety of locations to try.

The North West prides itself on being one of the most ideal business tourism locations in South Africa and invites you and your business to explore the vast possibilities on offer in our remarkable province.

Benefit from our outstanding service, stylish environment and excellent meeting, incentive and conference facilities. Meet in the Bokone Bophirima Province!



Agricultural Wonderland

Agriculture in the Bokone Bophirima Province is critical to both the regional and the national economy. South Africa is essentially self-sufficient in agricultural production and is frequently a net exporter of food. While agriculture may only contribute 3.4% to the GDP, it plays a vital role in the economy and provides 8% of the province's employment opportunities.

Sunflower seeds, ground nuts, maize, wheat and cattle dominate the sector. High-yield crops include citrus, summer grains, tobacco and cotton, though almost every type of animal, crop, fruit and vegetable production is found in the Province.

The eastern part of the Province has more water resources, higher rainfall and is closer to fresh produce markets. For this reason, vegetables, flowers and poultry have a comparative advantage here. Further west, in the dryer Vryburg area, some of the largest cattle herds in the country are to be found.

Investment opportunities in agriculture arise from the high quality of produce and the fact that most crops are harvested during the Northern Hemisphere winter.

Maize is South Africa's most important field crop. In good years, production exceeds domestic requirements (about 7,5m tons) and the country is able to export the surplus.

South Africa is also among the top 10 producers of sunflower seeds in the world and the Bokone Bophirima Province accounts for 40% of the total South African crop. In recent years, there has been a significant increase in the demand and price of sunflower seeds and production. Since 1997, the province's production and that of South Africa has nearly doubled.

The Bokone Bophirima Province accounts for a disproportionate share of livestock production in the country. It produces nearly 13% of the cattle and 3% of pigs nationwide and over 11% of goats. Some of the largest cattle herds in the world are found at Stellaland near Vryburg, which explains why this area is often referred to as the 'Texas of South Africa'. Marico is also cattle country.

Milk production exceeds 11% of the total South African production. The large grain crop supports the feed mills in the province which meet the requirements of feedlots, dairy farms, broilers and other animals.



DISCOVERING THE TREASURE ROUTE

The N12 Treasure Route is an exciting tourism development in the Bokone Bophirima Province, created to open a wide range of wildlife, cultural, scenic, industrial and eco attractions to the visitor.

The route starts on the N12 west as it enters the Bokone Bophirima Province near Fochville, travelling through the goldfields via the towns of Potchefstroom, Stilfontein and Klerksdorp. South of Potchefstroom the route takes you to the world famous Vredefort Dome and then follows the scenic Vaal River through the villages of Wolmaransstad and Christiana en route to the historic city of Kimberley, situated in the Northern Cape.

The Towns and Attractions of the Treasure Route

Fochville: Fochville, proclaimed a town in 1920, was laid out on the farms Kraalkop and Leeuwspruit. The town was named after a commander in the French Allied Forces, Marshall Ferdinand Foch.

Potchefstroom: Potchefstroom houses a multitude of national monuments, respected educational institutions and a strong agricultural economy.

Vredefort Dome: The Vredefort Dome was created by a massive meteorite over 10km³ in size. It struck the earth about 3000 million years ago, near the present day village of Vredefort.

Stilfontein: Greater Stilfontein forms part of the Klerksdorp, Orkney, Stilfontein, Hartbeesfontein area. The historically significant town is renowned for its hospitality and sports facilities, and hosts the annual Rose Festival in spring when the famous Stilfontein roses bloom.

Klerksdorp: Klerksdorp city was named after J de Clerq, first magistrate in the area after 12 Voortrekker families settled on the banks of the Schoonspruit in 1837.

The discovery of gold in 1886 saw thousands of prospectors flock to the area. Today, Klerksdorp is the centre for a large mining and agricultural economy and boasts the second largest grain co-operative in the world.

Wolmaransstad: Wolmaransstad lies in the valley of the Makwassie Stream, which takes its name from the many wild spearmint bushes that grow along its banks. Founded in 1891, the town was an important stop on the old postal route between Johannesburg and Kimberley. Today it serves as an important diamond-buying centre.

Bloemhof: Bloemhof, a maize and cattle farming town, was established in 1864. The town lies on the banks of the Vaal River.

Christiana: When diamonds were discovered in the Vaal River in the 1870s, the Transvaal Government established a settlement on the banks, naming it Christiana, after the only daughter of then Pres. Pretorius.

Taung: Taung made world headlines when Australian anthropologist Professor Raymond Dart made a startling find of The little Taung skull here in 1924. Every town and village on the Treasure Route is dedicated to providing the tourist with quality information and assistance.

A wide-angle photograph of the Sun City Golf Course. In the foreground, a lush green golf course with a small pond and a waterfall is visible. In the background, a large, ornate, golden-colored building with multiple domes and towers sits atop a hill, surrounded by dense greenery. The sky is a clear, light blue.

Sun City

A world Class

GOLF DESTINATION

Sun City Golf Course is located within the Sun City Resort in the North West Province of South Africa. It is renowned for its world-class facilities and stunning natural surroundings.

Sun City offers two championship golf courses designed by legendary golfers. The Gary Player Country Club Course, designed by Gary Player himself, and the Lost City Golf Course, designed by South African golfing icon, Gary Player.

This course is known for hosting prestigious golf tournaments, including the Nedbank Golf Challenge, formerly known as the Million Dollar Challenge. It features lush fairways, strategically placed bunkers, and challenging greens.

The Lost City course is famous for its unique design and breathtaking views. It winds through a rocky landscape with water features, including a unique 18th hole where golfers have to hit their ball over a ravine filled with crocodiles.

In addition to the courses, Sun City Golf Course offers state-of-the-art practice facilities, including driving ranges, putting greens, and professional instruction from experienced golf coaches.

Accolades: Both courses at Sun City have received numerous awards and accolades, solidifying their reputation as premier golfing destinations in South Africa and beyond.

Resort Amenities: Golfers can enjoy a range of amenities at the Sun City Resort, including luxury accommodations, fine dining options, entertainment venues, and recreational activities for the whole family.

ADVENTURE WONDERLAND



No matter how old you are or what time of the year you decide to visit the spectacular Bokone Bophirima Province, there will always be a host of exciting, exhilarating, adrenalin pumping adventure activities on offer.



Hot Air Ballooning



Quad Biking



Elephant-back Safaris

Zip Slide 2000

Situated in Sun City, the ProNutro Zip Slide 2000 is the longest zip slide in the world. The slide is approximately 280 m high, two kilometers long, reaches a speed of 150 km per hour plus and guarantees a two to three minute unadulterated adrenalin rush. Secured in two harnesses and suspended below a free running trolley that is attached to a steel cable, one experiences the feeling of flying and acceleration as you descend down the wire.

Sliders are at times 100m in the air and at other times only 2.5m above the ground. The cable runs from the top of the 280m high koppie to the top of a mast 2km away. Towards the end of the ride, the decent is slowed as you go uphill, then you roll back to the lowest point on the wire where you are assisted to dismount the ride. Solo and tandem slides are available so this ride has an appeal for even the most amateur adventure junkie. The Zip Slide 2000 is an ideal activity for the adventurous at heart aged 12 years and over. The zip 2000 is great fun used as part of a team-building package for corporate groups visiting Sun City.

www.balloon.co.za, www.gametrac.co.za and www.zip2000.co.za

Hot Air Ballooning

To fly high above the earth with nothing but a balloon keeping you afloat and nothing but a basket and fresh air separating you from the earth... what an amazing experience. There are two companies within the province that offer this magical experience and they are Gametrackers, situated alongside the Pilanesberg Nature Reserve nearby Sun City and Bill Harrop's Original Balloon Safaris, located in the Magaliesburg region close to Johannesburg and Pretoria.

Flights are approximately an hour long.

Quad Biking

With so many trails and scenic views to choose from, it's hardly surprising that quad biking has become such a popular activity over recent years. What could be more fun than riding through lush green grass and muddy paths or splashing your way through mountain streams while simply enjoying the breathtaking views of the mountains and wilderness that surround you?

Elephant-back Safaris

Guests staying in the Pilanesberg area are invited to join Pilanesberg Elephant-Back Safaris on a unique and extraordinary African adventure, which takes travellers trundling through the wilderness on the back of one of Africa's gentle giants. Join Chikwenya, Sharu, Sapi, Mana, Michael and Lesego for a game viewing experience with a difference.

These elephants are all orphans as a result of reduction exercises carried out by the Zimbabwe National Parks Department in the 1980's. Most orphans were sold to Zoo's and Circus's around the world, however these few were fortunate enough to stay on African soil and passed their early lives on private game farms. They were soon to outgrow this lifestyle and Wild Horizons, in an effort to improve and secure the elephants existing lifestyle, created this amazing safari experience.



THE SILENCE THAT ROARS

UKUTULA LODGE AND GAME RESERVE

“The greatness of a nation can be judged by the way its animals are treated” - *Mahatma Gandhi*



So you take a drive, looking for any secluded environment that may spark your interest. Almost like playing darts you take that dart and throw it at the board hoping for the best. You hit Ukutula Lodge and Game Reserve not quite knowing what to expect. I promise you come back rather humbled with a better sense of the importance of our surroundings and also a great appreciation of the people that care to tend the land, nurture the wildlife and ensure that the fauna and flora of their presence remains as unexploited as possible.

Just a 30 minute drive from Johannesburg you arrive and are greeted by a most warm staff who very sternly, but affectionately, explain how as an eco-tourism centre there are rules that must be adhered to. You realise immediately that the actual tenants are the various antelope, the various big cat species, and the giraffe that tower over you including the hyenas with their chuckle, not to mention the over 130 bird species.

Registered as a captive breeding, commercial exhibition and rhino rehabilitation facility you will find that this is a property that continues to amaze. Animal rescue, research and education are key to this reserve. Ukutula spans through 260 hectares, boasts a 4 star graded lodge with self-catering accommodation, swimming pools, a restaurant as well as access to the private reserve where you can view the many animals and bird species.

With the vision of Ukutula being “to share the wonders of wildlife to inspire conservation, research, education and wildlife ethic,” It is a truly humbling experience to interact with the cubs as you are given this first hand education from the extremely knowledgeable staff.

Several of the wildlife have been rescued and nursed back to health and eventually are sent back out into the wild or sold to other reputable reserves. Equally the stories of how cubs were born....It is a sad and cruel reality that our predator numbers are on the decline. The elephant, lion, cheetah, wild dog and rhino are definite targets for various reasons. These comprise of trophy hunting, killing for medicinal reasons, or even culling. Breeding programmes at Ukutula are there to mitigate this decline. Nature is to be nurtured. The Ukutula Conservation Centre believes that through personal interaction with wildlife, combined with professional and exciting wildlife

education, people will remain connected with nature and wildlife, realise the importance of a rich biodiversity, respect all life, care more and be more proactive supporters of conservation.

The new Ukutula Conservation Centre (UCC) is not only a genetic bio bank and research facility, it also includes an extensive educational programme, with various wildlife and conservation courses and educational opportunities.

I listened attentively as the owner of Ukutula Willie Jacobs known by all as Oom Willie took me on a walk on the wild side. He explained natural breeding, research projects and the manner in which the wildlife is conserved. “We also focus our Corporate Social Investment in support of the growth of local entrepreneurs and communities, education, research and conservation.”

Driving back from a visit to Ukutula one cannot help but have a greater sensitivity to ones surroundings. You have to visit the place of quiet to become converted.

For more information: www.ucc-campus.org · www.ukutula.com





Refining our Focus

Smaller Parks & Reserves

Barberspan Bird Sanctuary

Just north of Delareyville, lies one of the largest waterfowl sanctuaries in Southern Africa. Over 350 species have been recorded here including species from as far as Asia, Europe and Russia. Bird Life SA has declared the reserve an important national birding site. Barberspan is also a RAMSAR Convention accredited wetland of international importance for migratory birds & waterfowl.

Bloemhof Dam Nature Reserve

The endless blue of the dam offers the best fresh water-angling dam in the country and annually hosts international as well as national championships. The reserve also offers seasonal hunting packages.

Boskop Dam Nature Reserve

Boskop Dam, which is set in rolling grasslands, serves as an important recreational destination for the many communities within close proximity. The reserve is noted for outdoor recreation - apart from angling, opportunities for yachting, canoeing, birding and game viewing are also offered. Game viewing and bird watching on the reserve are also popular attractions. The dam and its surroundings harbour a rich bird population and the reserve's wildlife includes black wildebeest, eland, springbok, red hartebeest, zebra and blesbok. Boskop is an ideal weekend destination for either campers or for a one day excursion into the country and a leisurely picnic beside the dam.

So much more to discover...

Borakalalo National Park

Borakalalo is one of the most diverse conservation areas of North West, where visitors can walk freely along prescribed trails to enjoy the eco-diversity of this very special park.

Botsalano Game Reserve

Botsalano, near Mafikeng, is renowned for its rhino viewing and the idyllic Mogobe tented camp which overlooks a waterhole.

Kgaswane Mountain Reserve

Kgaswane is located in the scenic Magaliesberg. The Baviaanskrans and Summit Hiking Trails meander through waterfalls and natural pools. These routes and the frontier style camping facilities are considered among the best in South Africa.

Mafikeng Game Reserve

The reserve offers plains game viewing as its main attraction. The Molopo River that meanders through it attracts a multitude of bird species.

Molopo Game Reserve

Molopo is at the far western boundary of the province. It is famous for its raptor breeding and also offers excellent hunting packages.

SA Lombard Nature Reserve

This reserve is ideal for those in search of peace and serenity. It is home to numerous antelope, small predator and bird species. Accommodation is available in a luxury guesthouse. Seasonal hunting is also offered.

Vaalkop Dam Nature Reserve

The Vaalkop Dam is situated 54 km north of Brits, near Beestekraal and northeast of Rustenburg, in typical broken bushveld country. It is renowned as both a prime angling and birding destination. Fish species include carp and yellowfish, which are plentiful. Although visitors enjoy angling and boating opportunities at Vaalkop Dam, this 3 996 ha nature reserve is tailor-made for bird watchers. Over 340 bird species have been recorded in the reserve. An 800 ha section of the reserve has been set aside as a bird sanctuary (which is not open to the general public). Those wishing to observe the birds must book in advance.

Wolwespruit Dam Nature Reserve

This small but scenic reserve conserves attractive riverine bush and is a popular angling and hiking destination, along the tranquil river frontage environment. Wolwespruit is one of the least known of the North West parks and has retained much of the appeal of the natural riverine environment. It also conserves a variety of plains game. Wolwespruit Nature Reserve is well known for yellowfish angling in the rapids with artificial lures and flies.



MINING & MINERAL BENEFICIATION

The Bokone Bophirima Province is known as the Platinum Province for a good reason – South Africa produces over 84% of the world's Platinum Group Metals output and the Bokone Bophirima Province accounts for 64.7% of this national total.

The province's 87 mines employ nearly 27% of the country's total mining population. Thus, mining is considered the mainstay of North West's economy and it produces 31% of the province's Gross Domestic Product (GDP).

The Bokone Bophirima Province is in fact South Africa's dominant province in mineral sales as it makes up 15.5% of the mining GDP in South Africa. The North West is also the dominant province in mineral sales with a contribution of 17.8% to the South African mining sector in 2007.

Minerals beneficiation represents a chief economic advantage to the region, with the beneficiation of platinum, dimension stone and granite, ferrochrome and diamonds set to create long-term and sustained economic growth. Platinum beneficiation – including jewellery manufacturing and training – is therefore an intrinsic part of the Provincial Growth and Development Strategy.

The North West Bushveld Igneous Complex is recognised as the world's richest platinum reserve, with the North West heading up the country's platinum production.



Fortunately, the outlook for platinum group metals (PGMs) remains excellent. Demand for platinum by the jewellery, automotive, electronic, glass and petroleum industries has grown significantly over the past few years, and economists expect growth to be strong for the next decade.

Platinum by-products such as nickel, palladium and rhodium are also highly valued.

Platinum mining in the Bokone Bophirima Province is booming. Investment in the area is active and huge expansions worth billions of Rands are already underway at a number of the platinum mines in the area, creating a strong comparative advantage for the province and excellent prospects of sustained economic growth over the next decade.

Gold Mining

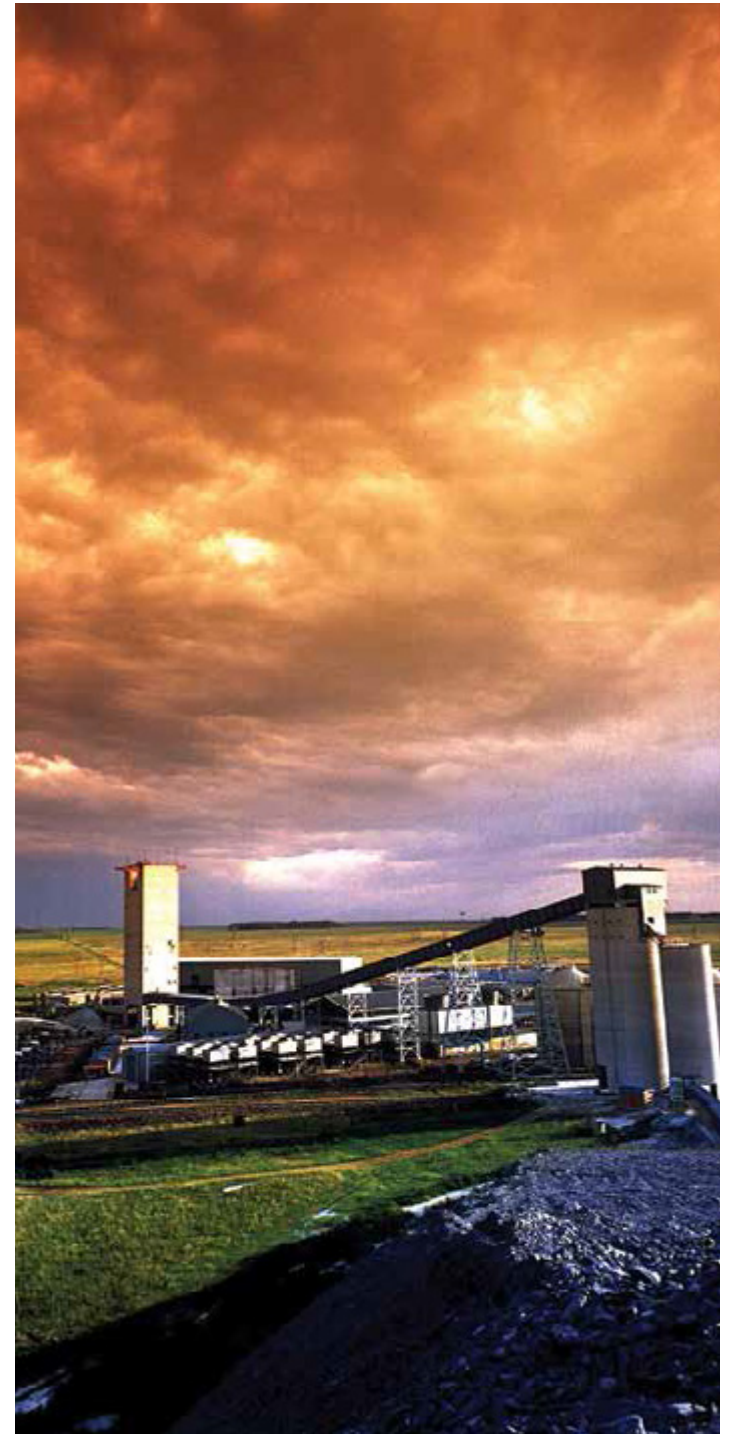
Though its contribution to the GDP has fallen, gold still plays a vital role in the South African economy. South Africa is the second largest gold producer, supplying 11.1% of the global output. The Bokone Bophirima Province is home to seven gold mines that supply around 25% of the total South African production.

Other Mining Operations

There are many other important mineral resources in the Bokone Bophirima Province, which are of interest to prospective investors and include rhodium, uranium, diamonds, fluorspar, copper, vanadium, limestone, slate, phosphate, coal, manganese, dimension stone, cement and nickel. New mining legislation, along with official empowerment policy and the mining charter, has opened the mining sector to new and smaller mining interests.

South Africa is the world's fifth largest producer of diamonds and much of this production comes from Lichtenburg, Ventersdorp, Koster, Christiana and Bloemhof.

The North West's mines still have substantial reserves which, at the current rate of consumption, will last for many years. Increased demand over the past decade has spurred massive expansion in mining by the major mining houses, with more expansion plans in the pipeline. The economic spin-offs will enhance growth prospects for the province, especially in local beneficiation.



ENERGY



The Bokone Bophirima Province has been identified as a promising source of bio-fuels, which refer to renewable liquid fuels that are manufactured from sustainable agricultural resources. Bio-fuels are carbon dioxide neutral as the CO² emitted during production and utilisation is absorbed by the plant material.

The two most important bio-fuels are bio-diesel and bio-ethanol, which can be blended with diesel and petrol respectively. The Mafikeng Bio-Diesel Company, a public-private partnership located in the Mafikeng IDZ, has launched a project based on the extraction of fuel from the seeds of three indigenous oil-bearing trees.

The total project investment amounts to around R800 million and has the potential to create 13 000 jobs in the rural community surrounding Mafikeng. Feasibility studies are also being conducted into the processing of maize and sunflowers into bio-fuel, and sweet sorghum into bio-ethanol.

MANUFACTURING

Given the sensitivity of the Bokone Bophirima Province's economy to world mineral prices, the Province plans to reduce its dependence on the mining sector, with an increased diversification to tourism and non-mining related manufacturing industries, evident in the recent 4.5 percent year-on-year growth in this sector.

The North West's manufacturing sector is largely centred around the big five municipalities; namely Brits, Rustenburg, Tlokwe (Potchefstroom), Matlosana (Klerksdorp) and Mafikeng, which account for more than 50% of total manufacturing production in the province.

The Brits industries concentrate mostly on manufacturing and construction, while those at Matlosana (Klerksdorp) are geared towards the mining industry, and those at Rustenburg towards agriculture.

Beneficiation of mineral resources is a natural progression from the strong mining sector, and beneficiation of animal and mineral products and agro-processing are poised for growth.

In the high-tech manufacturing area, automotive parts, electrical machinery, electronic, audio- and medical equipment are already being manufactured in the province using local materials.



Deep Impact Vredefort Dome

The Vredefort Dome, a World Heritage Site, approximately 120km south-west of Johannesburg, is a representative part of a larger meteorite impact structure, or astrobleme, dating back 2 023 million years. With a radius of 190 km, it is renowned as the oldest astrobleme yet found on Earth, as well as the most deeply eroded.

Vredefort Dome bears witness to the world's greatest known single energy release event, which had devastating global effects, including, according to some scientists, major evolutionary changes.

It provides critical evidence of the Earth's geological history and is crucial to the understanding of the planet's evolution. Despite the importance of impact sites to the planet's history, geological activity on the Earth's surface has led to the disappearance of evidence from most of them, and Vredefort is the only example to provide a full geological profile of an astrobleme below the crater floor.

What Created the Vredefort Dome?


The Magaliesberg - Witwatersrand feature is the result of natural upliftment from below of sedimentary sandstone layers so that the Magaliesberg rock layers slope down to the north, while the

Witwatersrand rock layers slope down to the south.

The ring of hills we see now are the eroded remains of a dome created by the rebound of the rock below the impact site after the asteroid hit. The original crater, now eroded away, is estimated to have been 250 – 300 km in diameter. Some 70 km³ of rock would have been vaporised in the impact.

In terms of size and visibility, the Vredefort Dome structure just beats the Sudbury impact structure in Canada. The Sudbury structure is some 200 km in diameter and is estimated to be 1.85 billion years old. Evidence of four impacts even older than Vredefort have been found in the greenstone rocks around Barberton in South Africa, and corresponding rocks in the eastern Pilbara block of Western Australia. However, unlike Vredefort, these impacts are no longer recognizable as structures on the surface.

All things considered, the Bokone Bophirima Province is undoubtedly home to a wealth of historical sites. For anyone who has even the slightest interest in where we come from and where we are sure to be going, this treasure trove of sites is a must see when next planning to visit the province.



Bokone Bophirima Province

AS A PREFERRED
INVESTMENT DESTINATION

Reasons to invest in the Bokone Bophirima Province of South Africa

- A province that is serious about business
- Good infrastructure (road network, airports, hospitals, schools)
- Low cost of labour, electricity, water, land and factory rentals and adequate industrialisation
- Easy access to markets in the SADC region and Africa
- Gateway to Africa, especially Southern Africa
- Affordable pool of labour (skilled and unskilled)
- Home to more than 20 Trans-National Companies (TNCs) and local companies reinvesting in the province
- Scoped projects ready for investment, supported by a solid financial services sector (See project list on page 39)
- Good quality of life
- Malaria-free game reserves
- Fastest growing province in SA between 2002 and 2003

Easy access to markets and gate way to Africa

- Bordering Botswana, the North West is ideally positioned to access the 14 countries comprising the Southern African Development Community (SADC) as well as the islands off Africa's east coast, and even the Gulf States and India. The province's well developed road and rail links provide the platform and infrastructure for ground transportation deep into sub-Saharan Africa.
- The SADC FTA signed in August 2008 provides access to a market of over 250 million consumers
- Future FTA with SADC, COMESA & EAC will provide access to a market of over 700 million consumers
- North West offers easily available skills and distribution channels imperative for commercial ventures into Africa.
- North West plays a significant role in the supply of energy, relief aid, transport and communications to the continent.
- North West is well-positioned to be used as a shared services hub for companies' African operations, especially for Sub-Saharan countries.

North West's Key Economic Sectors in Summary:

- **Agriculture:** North West is the food basket of Southern Africa contributing more than 20% of South Africa's maize crop as well as livestock (cattle & poultry), sunflower seeds and oils; nuts; citrus, and tobacco (of which most are GMO free).
- **Culture:** Culture includes the cultural, natural and historical heritage

and is closely linked to tourism. The North West is the only Province in the country which has Arts Development and Training Institutions in the form of Mmabana Centres. These centres are situated in three of the four districts of the Province and are located at Taung, Mahikeng, Lehurutshe, Klerksdorp and Tlhabane. The Mmabana Arts, Culture and Sport Foundation is popularly known across the country for producing household names that have dominated the South African entertainment landscape over the past two decades.

- **Tourism:** Tourism is the 4th most important economic sector in this predominantly rural, and scenic, province. The North West has a total of 14 provincial parks within its borders. The most well-known are the Pilanesberg and Madikwe National Parks and the province boasts a wide array of species, ecosystem and habitats – including the Big Five in a malaria-free environment.
- **Mining:** The North West contributes 50% of world's platinum, and is also home to gold, uranium, diamonds, fluorspar, copper, vanadium, limestone, slate, phosphate, coal, manganese, dimension stone, cement and nickel. Mining is the most profitable sector in the North West with a high concentration of profits accruing to mining firms in the Bojanala District. Mining contributes 31.3% of gross domestic product by region (GVA-R) and 15% of provincial employment. The Bokone Bophirima Province is the largest producer of platinum group metals in South Africa, accounting for some 64.7% of the nation's output.
- **Manufacturing:** Automotive parts, non-metallic minerals, fabricated metals, food processing, Soya protein, etc.
- **Green Economy:** High potential renewable energy opportunities exist within the subsectors of municipal waste conversion, biomass (converting alien invasive plants into energy) and solar technologies including off-grid energy generation for rural areas.
- **Small and Medium Enterprises:** The economy has a strong local Small and Medium Enterprise (SME) base, with many becoming involved in high-value activities such as exporting and investment in Research & Development (R&D) and Innovation. As a result, the province has the opportunity to further develop these areas and work towards an economy based on innovative firms competing in export markets.
- **Trade:** The province accounts for a small share of South Africa's overall international trade and contributed 2% to trade output in 2014. Close proximity to Gauteng provides access to markets making trade an important sector in the North West. The North West is a net exporter of goods with a concentrated export basket – not only in terms of products, but also in terms of the countries or regions traded with.
- **Services:** Business and financial services contribute 13.1% to provincial GVA-R (2014) and accounts for 12% of employment. Significant opportunities for BPO&O exist within the sector.



NORTH-WEST
PARKS & TOURISM BOARD
EXPLORE, EXPERIENCE, ENJOY



ACCOMMODATION GUIDE

Bojanala District Municipality
Ngaka Modiri Molema District Municipality
Dr. Kenneth Kaunda District Municipality
Dr. Ruth Segomotsi Mompati District Municipality

BOJANALA DISTRICT MUNICIPALITY ACCOMMODATION GUIDE

Brits • Hartbeespoort • Rustenburg

Name of establishment	Contact number	Email address	Town	Number of rooms
Kedar Lodge	014 573 3218		Rustenburg	65
Tshiberry Boutique BnB	084 884 8266/082 442 4231		Rustenburg	17
Rustenburg Palms Lodge	014 597 2520		Rustenburg	36
The Grand Comfort	014 065 0904		Rustenburg	20
Komodo Guesthouse	014 592 0915		Rustenburg	20
Echo Garden Guesthouse	067 044 4346		Rustenburg	9
Bombelela Lodge	083 236 8326		Rustenburg	19
Boubou Bed and Breakfast	083 457 9954		Rustenburg	4
Omaramba Guesthouse	014 572 3004		Buffelspoort	
Paula's Guesthouse	014 533 2842		Rustenburg	28
Letsatsing Lodge	083 332 0099/073 993 2809		Rustenburg	11
JTM Belleggings t/ as franka Guesthouse	083 407 0127		Rustenburg	19
Ons Dorphins Guesthouse	014 592 4677/082 927 5079		Rustenburg	85
Rustenburg Boutique Hotel	014 592 4645		Rustenburg	19
Travellers Inn	014 596 7654		Rustenburg	32
Boschdal	014 533 3783		Rustenburg	27
Stop in Stay Lodge	014 597 2002		Rustenburg	45
Thaba Legae Guest Lodge	082 502 3309		Rustenburg	22
Gs & Y Bed and Breakfast	060 394 5202		Rustenburg	6
Maggy S Bed and Breakfast	078 361 7977		Rustenburg	8
KnB Bed and Breakfast	082 711 3265		Rustenburg	8
Matshi Bed and Breakfast	081 808 1238		Rustenburg	4
Majwe Masweu Bed and Breakfast	014 565 2120		Rustenburg	7
Tshenolo Guest Lodge	079 805 2535		Rustenburg	9
Alpha Lodge	072 546 1347		Rustenburg	26
Kgaswane Country Lodge and Spa	014 537 8900		Rustenburg	46
Adem Gasteplaas	083 635 9233		Rustenburg	9
Road Lodge	014 537 3088		Rustenburg	90
Sparkling Waters Hotel and Spa	014 535 0000-5		Rustenburg	87
Manor Hills Guest Lodge	014 537 2811/084 619 9958		Rustenburg	50
Excalibus Hotel a Restaurant	076 054 9950		Rustenburg	10
Sundown Country Estate	014 573 1000		Rustenburg	175
Anew Resort Hunters Rest	014 537 8300		Rustenburg	98
Lily Park Lodge	014 061 0285/082 266 6666		Rustenburg	27
Stayeasy	014 537 6540		Rustenburg	125
Pine Inn	083 252 6100		Rustenburg	10
President Paul Kruger Guest Lodge	072 142 9911		Rustenburg	16
Orion Safari Lodge	078 855 9033		Rustenburg	131
Rustenburg kloof Resort	014 594 1038	admin@rtbkloof.co.za	Rustenburg	70
Kings Palace Hotel	010 109 0947		Rustenburg	119
Ananda Lodge	014 573 4100/079 506 4757		Rustenburg	57
Greenside Accomodation	071 587 0051/014 592 0762		Rustenburg	26
Rosewood Country Lodge	014 004 0014		Rustenburg	13
ATKU Buffelspoort	014 572 1000		Buffelspoort	200

Bon Hotel Rustenburg	014 151 0083		Rustenburg	69
Stop n Stay	014 597 2002		Rustenburg	45
Cross Point Trading The Royal Marang	014 513 4100		Rustenburg	68
Edrange	010 300 5676	ranggy@ranch.co.za/reservation	Hartebeespoort	9
Harties is Africa	076 724 8952	reservation@hartiesafrica.co	Hartebeespoort	18
Harties Lodge	082 454 0095		Hartebeespoort	17
Sky Lodge	082 903 3013		Hartebeespoort	40
La Dolce Vita	012 253 5045	stay@ladolcevitaguesthouse	Hartebeespoort	7
Magalies Park	060 790 2155		Hartebeespoort	186
Mount Amanzi	012 381 5400	reservation@mountamanzi.co	Hartebeespoort	167
La-Joya Lodge	012 004 3076	reservations@la-joya.co.za	Hartebeespoort	48
Letamong Lodge	079 081 8257	letamonglodge.co.za	Hartebeespoort	7
El-Shadai Luxury Lodge and Spa	083 247 9259/082 416 1335	cishadaigh@gmail.com	Hartebeespoort	8
Nehama Manor	079 859 6530	info@nehema.co.za	Hartebeespoort	11
Villa Paradiso Country Manor	012 253 1847	bookings@villaparadiso.co.za	Hartebeespoort	60
Three Oaks & Aloe	073 502 3320	info@309.co.za/stay@309.co	Hartebeespoort	17
CoComo	017 259 0303		Hartebeespoort	10
Pumleni Guest House	083 349 9612	booking@pumleni.co.za	Hartebeespoort	9
Khayamanzi Guesthouse	076 052 3637	bookings@khayamanzi.co.za	Hartebeespoort	10
Belle Vuegh Guesthouse	071 168 9151	info@bellevuegh.co.za	Hartebeespoort	6
Stirling Manor	012 253 2532	info@stirling-monor.co.za	Hartebeespoort	6
Galagos Lodge Guest House	079 351 4879		Hartebeespoort	8
Yacht House	082 071 760		Hartebeespoort	4
The Art Guesthouse	083 344 1759		Hartebeespoort	5
Damview Holiday Apartments	076 408 0220	damviewholidayapartments@	Hartebeespoort	4
Glen Africa Country Lodge	082 781 2579	info@glenafri.co.za	Hartebeespoort	13
Grasdak Guesthouse	017 207 1987		Hartebeespoort	39
Quad 1 Guesthouse	082 335 3713		Hartebeespoort	14
Three Oaks & Aloe	073 502 3320		Hartebeespoort	13
Palm Valley inn	012 0253 1923/012 253 0123	bookings@palmvalleyinn.co	Hartebeespoort	12
Annies Boutique Guest Lodge	077 518 9526	reservations@annieshouse.co	Hartebeespoort	6
Marjanlek Guesthouse	083 627 2511		Hartebeespoort	14
Avalon VacationHouse	071 891 6612		Hartebeespoort	
Marina View Guesthouse	071 891 6612	info@marinaviewsguesthous	Hartebeespoort	5
Kosmos Manor	012 253 5116		Hartebeespoort	5
Scenic Haven	082 454 2073	www.scenichaven.co.za	Hartebeespoort	9
Villa Paradiso Country Manor	012 253 1847	bookings@villaparadiso.co.za	Hartebeespoort	59
Watershed Guesthouse	081 409 0226	info@watershedguesthouse	Hartebeespoort	9
Leopard Lodge	012 207 1130		Hartebeespoort	9
Migdash	079 221 4143	adm n@migdash.co.za	Hartebeespoort	9
Pecan Manor	082 861 6213	info@pecanmanor.co.za	Hartebeespoort	32
Iris Retreat	076 777 9805	christine@irisretreat.co.za	Hartebeespoort	4
Vulture Creek Holiday Accomodation	083 691 6188	vulturecreek1@gmail.com	Hartebeespoort	8
Big Tree Guest Lodge	083 395 5617		Brits	7
Hadjies Guest Lodge	083 630 3455		Brits	14
Arison Game Lodge	073 444 0045		Brits	10
Tamboti Private Lodge	082 307 8791		Brits	8
Amigos Guest Lodge	063 207 5278		Brits	34
Palm Swift Hotel	012 940 2182		Brits	77
Dassie Palace	082 562 3894		Brits	21
Esmarine Lodge	083 372 9903		Brits	7
Copperwood Hotel	012 001 4332		Brits	77
J & J Guesthouse	073 901 0741		Brits	7

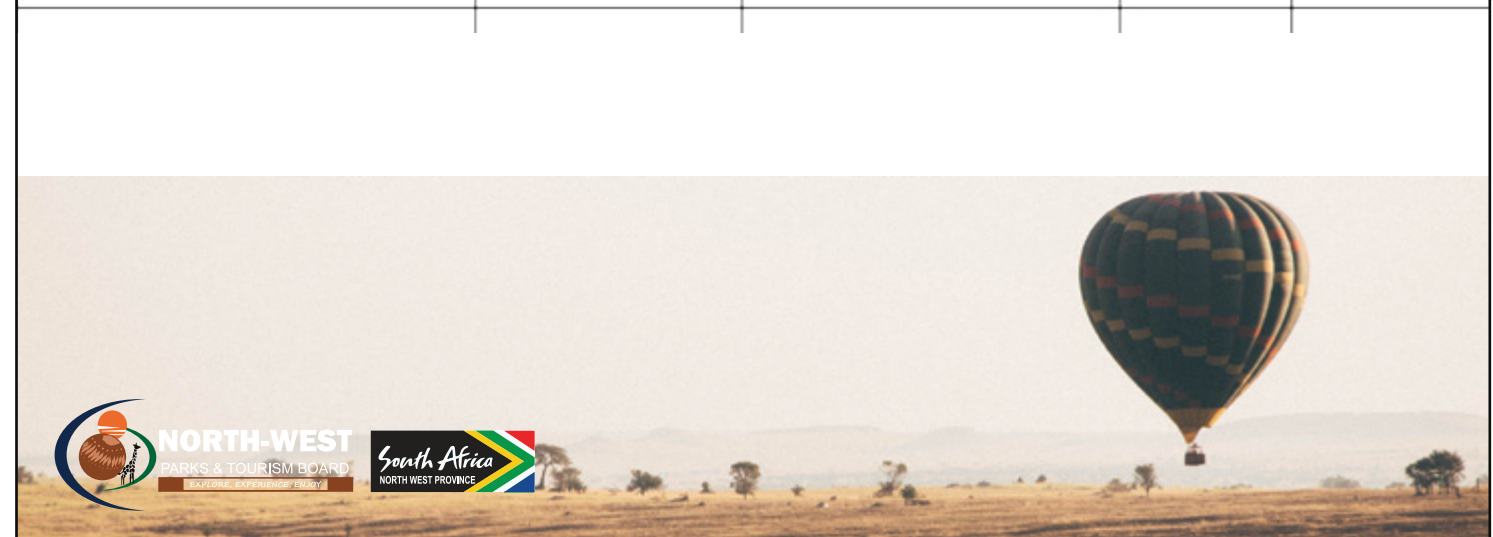
Naledi@ 53 Private Game Reserve	071 624 2258		Brits	5
Vennys Resort	078 802 8201		Brits	40
Paul and Mollies Guesthouse	076 934 6564		Brits	4
Maroela Guesthouse	083 726 9564		Brits	14
Wi low Manor	071 199 7577		Brits	8
Casa Bianca Guesthouse	073 987 1856		Brits	20
Casa Grande Guest Lodge	072 696 9749	info@casagrandebb.co.za	Brits	38
Esmarine Lodge	082 372 9903	esmarinelodge@gmail.com	Brits	12
Grasdak Guesthouse	082 469 2228		Brits	8
Innibos Guesthouse	083 274 8127		Brits	6
Thokolo Lodge	072 023 7784		Brits	14
Acroden Lodge	060 663 6053	bookings@acrodenlodge.com	Brits	6
Little Swift	083 262 4053	info@swiftchalet.co.za	Brits	8
Mamagalie Mountain Lodge		www.mamagalie.co.za	Brits	6
Maretwane Guesthouse	083 455 6966	info@maretlaneguesthouse.co	Brits	12
Grace point Guesthouse	010 007 3745	reservation@gracepoint.co.za	Brits	20
Ukuthula Lodge	012 254 4780	info@ukuthula.com	Brits	12
Oppie Plasie Guesthouse	083 390 7053/082 784 6691	info@oppiplaas.com	Brits	15
Tula Baba Guest Lodge	072 653 7244	bookings@tulababa.co.za	Brits	7
Sediba Lodge	073 147 8666		Brits	10
Mnkuru Private Lodge		bookings@mokuru.co.za	Brits	11
Dikhololo Resort	081 899 4477	bookings@beekmanholidays	Brits	140
Sable Ranch Bush Lodge	082 781 1121	reservation@sableranchlodge	Brits	8





Zeerust • Mahikeng • Lichtenburg •

Klein Marico Recreation Centre	018 011 0019/ 083 627 1505	Zeerust
Thaga Moso Resort	018 642 1053	Zeerust
Zeerust Guest House	071 525 9311	Zeerust
Africa Unplugged Guest Lodge	084 954 5606	Zeerust
Kareespruit Game Ranch & Guest H (self catering)	018 642 1381	Zeerust
Kareespruit Game Ranch & Guest H (Lodge)	018 642 1381	Zeerust
Kareespruit Game Ranch & Guest H (Camp site)	018 642 1381	Zeerust
Bly 'n Biekie B&B	083 353 7175	Zeerust
Kameeldoring Guest House	072 756 9411	Zeerust
Traceys Family Restaurant & overnight	018 642 1359	Zeerust
Tholo Lodge	071 602 5716	Zeerust
Sentihaga Guest House	072 951 4477/ 018 642 3845	Zeerust
Mountain View Guest House	084 506 1376	Zeerust
Marico Bosveld Guest House	018 642 3545	Zeerust
Gatego Guest House	082 448 2263	Zeerust
Queens Villa B&B	082 940 6782	Zeerust
Villa Rosa	082 940 6782	Zeerust
Kingfisher B&B	082 940 6782/ 018 642 1696	Zeerust
Sha Henne's Guest House	018 642 1434	Zeerust
Avanti	018 642 5894/ 079 887 9375	Zeerust
Kaya Inkalamo	079 218 5600	Zeerust
Amaris Guesthouse	062 552 2859	Lichtenburg
Vianto Guesthouse	018 632 6280	Lichtenburg
Scott's Manor Executive Apartments	018 632 0255	Lichtenburg
Scott's Manor Guesthouse	018 632 0255	Lichtenburg
Little Dreams Guesthouse	018 632 0111	Lichtenburg
Melville Guesthouse	018 632 3514	Lichtenburg
Lakeside Guesthouse	018 632 1835	Lichtenburg
Indigo mood Guesthouse	083 231 8407	Lichtenburg
Lichtenburg Guesthouse	018 632 2565	Lichtenburg
Joan Dry Flat Rentals	082 446 6357/ 083 233 8652	Lichtenburg
Sundowns Guesthouse	018 632 5577/ 082 443 9499	Lichtenburg
Jowie B&B	076 334 8431	Lichtenburg
Lees Haven Guesthouse & Conference Centre	018 632 0396/ 083 950 4638	Lichtenburg
Cascaquian Guest Lodge	076 374 8192	Lichtenburg
Valotone 2 B&B	079 620 6207	Lichtenburg
Kenny's Guesthouse	018 632 5909	Lichtenburg



DR. KENNETH KAUNDA DISTRICT MUNICIPALITY ACCOMMODATION GUIDE

Potchefstroom • Klerksdoep • Orkney • Stilfontein

Name of establishment	Contact number	Email address	Town	Number of rooms
Twin Palms Guesthouse	084 323 0400		Potchefstroom	13
The Feather Hill	066 429 9996		Potchefstroom	12
A Tapestry Garden Guesthouse	082 465 9754		Potchefstroom	12
Lotlametswe Bed and Breakfast	082 332 7521		Potchefstroom	13
Kumkani Country Lodge	018 290 7387		Potchefstroom	13
74 on Retief	067 667 0791		Potchefstroom	6
If Not Why Not Guesthouse	018 012 0011		Potchefstroom	10
Adato Guesthouse	018 294 5244		Potchefstroom	30
Road Lodge Potchefstroom	018 293 9300		Potchefstroom	90
Willows Garden Hotel	018 297 6285		Potchefstroom	41
Camelot Lodge	018 552 3609		Stilfontein	20
Camelot Lodge	060 558 7414		Potchefstroom	34
Ngwenya Hotel	018 484 1347		Stilfontein	110
Revival Guesthouse	072 032 5434		Stilfontein	20
Wawelpark Holiday Resort	018 441 1093		Stilfontein	51
The Key	018 473 2916		Orkney	34
Gamatlatjie Guesthouse	018 469 2041		Klerksdorp	28
Gamatlatjie Guesthouse	018 462 0235/079 067 6452		Klerksdorp	12
Casero Guesthouse	082 767 8882		Klerksdorp	8
Letsema Guest House	076 143 8639/068 801 9091		Klerksdorp	11
Rio Hotel Casino and Convention Resort	018 469 9100		Klerksdorp	70
The Pearl	073 104 3740		Klerksdorp	30
Guest house Gabby	076 309 2516		Klerksdorp	10
Villa Maria Guest House	018 468 5214		Klerksdorp	24
Villa d amico Guest House	081 808 4150/018 468 6911		Klerksdorp	6
Monsieur Devan Guesthouse	076 617 5762		Klerksdorp	25
Mon-Ae Guesthouse	076 763 6977		Klerksdorp	12
Beryl1 Guest House	083 872 1297	beryl1guest@gmail.com	Klerksdorp	6



DR. RUTH SEGOMOTSI MOMPATI DISTRICT MUNICIPALITY ACCOMMODATION GUIDE

Schweizer Reneke • Bloemhof • Taung • Vryburg • Ganyesa • Christiana

Name of establishment	Contact number	Email address	Town	Number of rooms
Phil-Wen Guest House	072 324 7071		Schweizer Reneke	6
Villa Mae Gastehuis	075 348 3800		Schweizer Reneke	8
Morakane Safari Lodge	083 385 2133		Schweizer Reneke	6(3 houses)
Uurpan Safari Lodge	072 150 1666		Schweizer Reneke	15
Feathers Guest Lodge	083 743 5534		Schweizer Reneke	10
Schweizer Guest House	073 385 4792		Schweizer Reneke	14
Sleepers Guest House	082 826 0581		Bloemhof	7
Sleepers Guest Lodge	084 520 5805		Bloemhof	8
Mekkie in die Son	053 433 9079/ 083 556 0053		Bloemhof	5
River Lodge Caravan & Tent Camping Site	075 496 4619		Bloemhof	0
Lepelle Lodge	082 497 9113		Bloemhof	5
Almar Exclusive Game Ranch	082 676 0776		Bloemhof	11
Bloemhof Dam Nature Reserve	053 433 170		Bloemhof	3
Taung Guest House	060 947 7046		Taung	9
La Patre Restaurant, Guesthouse & Conference	082 445 2343		Taung	17
The Times Premier Lodge	082 337 5603	bookings@times@gmail.com	Vryburg	19
Die K. shuis Bed & Breakfast	082 873 8351		Vryburg	9
Ikanyeng Guest House	053 927 0686		Vryburg	8
Mulupo Travel Inn	083 462 7266		Vryburg	25
De Hoek Guest House	082 779 3073		Vryburg	8
Abello Bed & Breakfast			Vryburg	6
Nqulube Lodge	053 927 0700		Vryburg	16
41 ON Market Lodge	053 927 0700		Vryburg	25
Heetrv Guest Rooms	082 920 9141		Vryburg	5
Villa Lin-Zene	082 524 9179		Vryburg	5
Boiketlo Gues. House	082 786 8472/ 053 995 1561		Pudimoe	33
Gali Lodge	073 194 5340		Taung	12
Ratlou Guest House	082 058 6254		Taung	8
Phoka Guest House	061 487 2741/ 073 470 9200		Taung	10
Haute Vue Guest House	083 288 8518/ 083 240 2535		Taung	7
Setlhare Guest House	072 809 5700		Ganyesa	11
Three Anglo Guesthouse	078 921 5398/ 071 472 7404		Vryburg	6
Taung Hotel School	053 994 1820		Taung	39
Lavender Lodge	053 927 1327		Vryburg	14
Plek Van Viorand	083 463 2079		Bloemhof	14
Op die wal	083 415 4464		Bloemhof	8
River Vleus Resort	075 496 4619		Bloemhof	5
De Dord Holiday Resort	082 552 5112/ 053 433 1327		Bloemhof	6
Neli Guest House	053 441 2717		Christiana	5
Stay a Night	072 119 5611		Christiana	4
Vaal De View	082 558 1511		Christiana	20
River Side Guest House	076 388 6619		Christiana	17
Nayang Lerajo Guest House	075 255 5615		Ganyesa	20
Klonckra Guest House	083 331 4493	admin@klondikevillage.co.za	Vryburg	20
Game View Lodge	082 820 2394		Vryburg	10
Rc Ja Botlho (1)	082624 8665	info@rejoatthe.co.za	Vryburg	25
Rc Ja Botlho (2)	082624 8666	info@rejoatthe.co.za	Vryburg	12
Mat-Mar Guest House	083 294 2892		Vryburg	10
Kriel Bed and Breakfast	082 294 2892		Vryburg	15
Bird Guest House	082 878 9680	birdguesthouse@gmail.com	Vryburg	10
Gae Lodge	076 456 1500		Ganyesa	14
Modise Lodge	082 531 6933		Taung	60
Villa Brocant	053 927 6211		Vryburg	19
Lockerbie Lodge	083 660 0301		Vryburg	34
Boereplaas	053 927 4462		Vryburg	14
Cephas Guest House	078 197 4583		Vryburg	7
Vryburg Conferencing	082 337 5603		Vryburg	
Kameelboom Lodge	053 050 5528		Vryburg	20



It's Your North West Province

Explore, Experience and Enjoy It



NORTH-WEST
PARKS & TOURISM BOARD
EXPLORE, EXPERIENCE, ENJOY



www.tourismnorthwest.co.za

